

승리의 갈보리

♩ = 96

작사/작곡/편곡 : 김은숙

INTRO

Vocals

F *mp* C/E Dm⁷ B \flat C

휘 장 은 - 갈 라 지 고 하 늘 문 - 은 열 렸 네 승 리 의

Piano

INTRO

F *mp* C/E Dm⁷ B \flat C

Synth Pad

INTRO

p *mp*

Acoustic Guitar

INTRO

F C/E Dm⁷ B \flat C

Electric Guitar

Bass Guitar

Drum Set

INTRO

Detailed description of the musical score: The score is for a 4/4 piece in B-flat major. The tempo is 96 BPM. The key signature has two flats (B-flat and E-flat). The score is divided into an 'INTRO' section and a main section. The 'INTRO' section consists of six measures. The Vocals part starts with a rest in the first two measures, followed by the lyrics '휘 장 은 - 갈 라 지 고' in measures 3 and 4, and '하 늘 문 - 은 열 렸 네 승 리 의' in measures 5 and 6. The Piano part provides harmonic support with chords F, C/E, Dm7, Bb, and C. The Synth Pad part features a soft, sustained pad in the first two measures, marked 'p' and 'mp'. The Acoustic Guitar, Electric Guitar, Bass Guitar, and Drum Set parts are all marked with rests throughout the entire score.

7 Dm⁷ C F/A B^b F

갈 보 리 언 덕 그 너 머 천 국 을 향 해 휘 장 은 갈

Dm⁷ C F/A B^b F

Dm⁷ C F/A B^b F

mp

mp

mp

12 C/E Dm7 Bb C Dm7 C

라 지 고 하 늘 문 은 열 렸 네 승 리 의 갈 보 리 언 덕 그 너 머

C/E Dm7 Bb C Dm7 C

C/E Dm7 Bb C Dm7 C

INTERLUDE

17 F/A B♭ Dm7 Fmaj9/C

천 국 을 향 해

INTERLUDE

F/A B♭ Dm7 Fmaj9/C

mf

INTERLUDE

F/A B♭ Dm7 Fmaj9/C

mf

f

mf

INTERLUDE

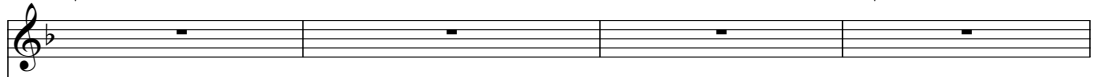
mf

21 F/A

B \flat

Dm⁷

Fmaj⁹/C



F/A B \flat Dm⁷ Fmaj⁹/C

F/A B \flat Dm⁷ Fmaj⁹/C

VERSE 1

25 F/A B \flat Dm 7 Fmaj 9 /C F/A

그 나라 향하여 오늘도 한 걸음 걷는 인

VERSE 1

F/A B \flat Dm 7 Fmaj 9 /C F/A

mp

VERSE 1

mp

VERSE 1

F/A B \flat Dm 7 Fmaj 9 /C F/A

mp

VERSE 1

mp

30 B♭ Dm⁷ Fmaj⁹/C F/A B♭

— 생 길 — 나 의 길 여 시 려 십 자 가 지 시 고 오 르 신 그 — 언 덕 —

Detailed description: This block contains the first line of the musical score. It features a vocal melody in a treble clef with a key signature of one flat (Bb). The melody is accompanied by five chords: Bb, Dm7, Fmaj9/C, F/A, and Bb. The lyrics are written below the notes.

B♭ Dm⁷ Fmaj⁹/C F/A B♭

Detailed description: This block shows the piano accompaniment for the first system. It consists of two staves: a treble staff and a bass staff. The treble staff contains chords and moving lines, while the bass staff contains a simple bass line. The chords are Bb, Dm7, Fmaj9/C, F/A, and Bb.

Detailed description: This block shows the piano accompaniment for the second system. It consists of two staves: a treble staff and a bass staff. The treble staff contains chords and moving lines, while the bass staff contains a simple bass line. The chords are Bb, Dm7, Fmaj9/C, F/A, and Bb.

B♭ Dm⁷ Fmaj⁹/C F/A B♭

Detailed description: This block shows the piano accompaniment for the third system. It consists of three staves: a treble staff, a middle staff, and a bass staff. The treble staff contains chords and moving lines, while the middle and bass staves contain a simple bass line. The chords are Bb, Dm7, Fmaj9/C, F/A, and Bb.

Detailed description: This block shows the guitar accompaniment for the third system. It consists of a single staff with a treble clef and a key signature of one flat. The guitar part features a rhythmic pattern of eighth notes and chords, with some notes marked with an 'x' to indicate muted strings.

35 Dm7 Fmaj9/C F/A Bb

내 죄 만 큼 무 거 윳 던 십 자 가 를 지 시 고

Dm7 Fmaj9/C F/A Bb

Dm7 Fmaj9/C F/A Bb

39 Dm⁷ Fmaj⁹/C F/A B^b

그 승 리 의 언 덕 위 로 우 름 초 대 하시 네

Dm⁷ Fmaj⁹/C F/A B^b

Dm⁷ Fmaj⁹/C F/A B^b

43 *Bb6* CHORUS *F* *C/E* *Dm7*

mf 휘 장 은 갈 라 지 고 하 늘 문 은

Bb6 CHORUS *F* *C/E* *Dm7*

mf

CHORUS

Bb6 *F* *C/E* *Dm7*

mf

CHORUS

mf

CHORUS

mf

47 B \flat C Dm 7 C F/A

열렸 네 승 리 의 갈 보 리 언 덕 그 너 머 천 국 을 향 해

The vocal line is in a 4/4 time signature. It starts with a B-flat major chord, followed by a C major chord, a D minor 7th chord, another C major chord, and finally an F/A major chord. The lyrics are written below the notes.

B \flat C Dm 7 C F/A

The piano accompaniment consists of two staves. The right hand plays chords and some melodic fragments, while the left hand plays a simple bass line. The chords are B-flat major, C major, D minor 7th, C major, and F/A major.

The piano accompaniment continues with two staves. The right hand has long, sustained chords, and the left hand has a steady bass line.

B \flat C Dm 7 C F/A

A second vocal line, similar to the first, with the same chord progression and lyrics.

An empty vocal staff, likely for a second voice part or a different arrangement.

A single piano accompaniment staff at the bottom, showing a bass line.

A single piano accompaniment staff at the bottom, showing a rhythmic pattern with 'x' marks above the notes.

5/1 B \flat Dm 7 Fmaj 9 /C F/A

B \flat Dm 7 Fmaj 9 /C F/A

B \flat Dm 7 Fmaj 9 /C F/A

B \flat Dm 7 Fmaj 9 /C F/A

f

16

55 B♭

VERSE 2

Dm⁷ Fmaj⁹/C F/A

mp

그 나 라 향 하 여 오 늘 도 한 걸 음 걷 는 인

B♭

VERSE 2

Dm⁷ Fmaj⁹/C F/A

mp

VERSE 2

B♭

VERSE 2

Dm⁷ Fmaj⁹/C F/A

mp

VERSE 2

mp

59 B♭ Dm7 Fmaj9/C F/A

생 길 나의 길 여 시 려 십 자 가 지 시 고 오 르 신 그

B♭ Dm7 Fmaj9/C F/A

B♭ Dm7 Fmaj9/C F/A

63 B \flat Dm 7 Fmaj 9 /C F/A

연 적 눈 보 다 더 흰 옷 으 로 죄 인

Detailed description: This block shows the vocal line for measure 63. The melody is written in a treble clef with a key signature of one flat (B-flat). The lyrics are written below the notes. Above the staff, the chord progression is indicated as B-flat, Dm7, Fmaj9/C, and F/A.

B \flat Dm 7 Fmaj 9 /C F/A

Detailed description: This block shows the piano accompaniment for measure 63. It consists of two staves: a treble clef staff with chords and a bass clef staff with a simple bass line. The chords are B-flat, Dm7, Fmaj9/C, and F/A.

Detailed description: This block shows a second piano accompaniment for measure 63, featuring a more complex texture with multiple voices in both the treble and bass clefs, including some tied notes.

B \flat Dm 7 Fmaj 9 /C F/A

Detailed description: This block shows a third piano accompaniment for measure 63. It features a treble clef staff with a rhythmic pattern of eighth notes, a middle staff that is mostly empty, and a bass clef staff with a simple bass line. The chords are B-flat, Dm7, Fmaj9/C, and F/A.

Detailed description: This block shows a fourth piano accompaniment for measure 63, which appears to be a guitar-style accompaniment with a treble clef staff and a bass clef staff. The notes are marked with 'x' to indicate fretted notes.

67 B \flat Dm 7 Fmaj 9 /C F/A

을 입 히 시 고 영 화 로 운 주 나 라 에 우 름

B \flat Dm 7 Fmaj 9 /C F/A

B \flat Dm 7 Fmaj 9 /C F/A

B \flat Dm 7 Fmaj 9 /C F/A

71

CHORUS
F C/E

mf

초 대 하시네 휘 장 은 갈 라 지 고

CHORUS
F C/E

mf

CHORUS

CHORUS
F C/E

mf

CHORUS

mf

75 Dm7 Bb C Dm7 C

하늘 문은 열렸네 승리의 갈보리 언덕 그 너머

Dm7 Bb C Dm7 C

Dm7 Bb C Dm7 C

하늘 문은 열렸네 승리의 갈보리 언덕 그 너머

79 F/A B♭ F C/E

천 국 을 향 해 휘 장 은 갈 라 지 고

F/A B♭ F C/E

F/A B♭ F C/E

83 Dm7 B♭ C Dm7 C

하 늘 문 은 열 렸 네 승 리 의 갈 보 리 언 덕 그 너 머

Dm7 B♭ C Dm7 C

Dm7 B♭ C Dm7 C

87 F/A Bb

천 국 을 향 해

F/A Bb

F/A Bb

F/A Bb

BRIDGE

90 Dm7 Fmaj9/C F/A Bb Dm7

mp

사 망은 예 수 를 무 덤 에 두 었 네 사 흘 이 지 나 어 둠 에 누 이

BRIDGE

Dm7 Fmaj9/C F/A Bb Dm7

p

BRIDGE

BRIDGE

Dm7 Fmaj9/C F/A Bb Dm7

BRIDGE

95 Fmaj9/C

F/A

Bb

Dm7

신 빛 이 신그리스 도 생 명의 창 조 주 돌 문 이

Fmaj9/C F/A Bb Dm7
mp *cresc.*

p

Fmaj9/C F/A Bb Dm7
mp *cresc.*

mp *cresc.*

mp *cresc.*

99 Fmaj9/C F/A B \flat Dm⁷

열 리 고 아 침 해 가 듣 을 때 차 가 워 진

Fmaj9/C F/A B \flat Dm⁷

Fmaj9/C F/A B \flat Dm⁷

103 Fmaj9/C F/A Bb Bb6

예 수 의 몸 숨 쉬 기 시 작 하 네

Detailed description: This block shows the first line of the musical score. It features a vocal line in a treble clef with a key signature of one flat (Bb). The lyrics are written below the notes. Above the staff, the chords Fmaj9/C, F/A, Bb, and Bb6 are indicated for the first four measures. The melody consists of eighth and quarter notes.

Fmaj9/C F/A Bb Bb6 8va

Detailed description: This block shows the piano accompaniment for the first system. It includes both a treble and a bass clef. The treble clef part features chords and melodic lines, with an 8va (octave) marking above the final measure. The bass clef part provides a harmonic foundation with chords and moving lines.

Detailed description: This block shows the piano accompaniment for the second system, continuing from the first system. It features a treble clef with sustained chords and a bass clef with sustained notes, creating a rich harmonic texture.

Fmaj9/C F/A Bb Bb6

Detailed description: This block shows the piano accompaniment for the third system. It includes a treble clef with a melodic line and a bass clef with a moving line. The chords Fmaj9/C, F/A, Bb, and Bb6 are indicated above the staff. The bottom-most staff shows a guitar-style accompaniment with 'x' marks indicating fretted notes.

CHORUS

107 F C/E Dm7 Bb C

f 휘 장 은 갈 라 지 고 하 늘 문 은 열 렸 네 승 리 의

CHORUS

F C/E Dm7 Bb C

f

CHORUS

mf

CHORUS

F C/E Dm7 Bb C

f

CHORUS

f

III Dm7 C F/A Bb

갈보 리 언덕 그 너머 천국 을 향해

Dm7 C F/A Bb

Dm7 C F/A Bb

115 F C/E Dm7 Bb C
휘 장 은 갈 라 지 고 하 늘 문 은 열 렸 네 승 리 의

F C/E Dm7 Bb C

Bb

F C/E Dm7 Bb C

119 Dm7 C F/A Bb

갈보 리 언덕 그 너머 천국 을 향해

Detailed description: This block contains the first line of the musical score, which is a vocal line. It starts with a treble clef and a key signature of one flat (B-flat). The melody is written in a simple, hymn-like style. Above the staff, the chord progression is indicated as Dm7, C, F/A, and Bb. Below the staff, the Korean lyrics are written: '갈보 리 언덕 그 너머 천국 을 향해'. The lyrics are aligned with the notes of the melody.

Dm7 C F/A Bb

Detailed description: This block shows the right-hand part of the piano accompaniment. It features a treble clef and a key signature of one flat. The right hand plays a series of chords and some moving lines, corresponding to the chord progression Dm7, C, F/A, and Bb. The notes are mostly block chords, with some movement in the upper register.

Detailed description: This block shows the left-hand part of the piano accompaniment. It features a bass clef and a key signature of one flat. The left hand plays a simple bass line, primarily consisting of single notes and dyads that support the harmonic structure of the right hand.

Dm7 C F/A Bb

Detailed description: This block shows the right-hand part of the piano accompaniment for the second system. It features a treble clef and a key signature of one flat. The right hand plays a rhythmic pattern of eighth notes, corresponding to the chord progression Dm7, C, F/A, and Bb.

Detailed description: This block shows the right-hand part of the piano accompaniment for the second system. It features a treble clef and a key signature of one flat. The right hand is mostly silent, with only a few notes or rests visible.

Detailed description: This block shows the left-hand part of the piano accompaniment for the second system. It features a bass clef and a key signature of one flat. The left hand plays a simple bass line, primarily consisting of single notes and dyads that support the harmonic structure of the right hand.

Detailed description: This block shows the left-hand part of the piano accompaniment for the second system. It features a bass clef and a key signature of one flat. The left hand plays a rhythmic pattern of eighth notes, corresponding to the chord progression Dm7, C, F/A, and Bb.

123 (회중)



Chord progression: F, C/E, Dm7, Bb, C

Chord progression: F, C/E, Dm7, Bb, C

ff

127

갈 보 리 언 덕 그 너 머 천 국 을 향 해

Dm7 C F/A Bb

Dm7 C F/A Bb

131

휘 장은 갈 라 지 고 하 늘 문 은 열 렸 네 승 리 의

F C/E Dm7 Bb C

F C/E Dm7 Bb C

135

갈보 리 언덕 그 너 머 천국 을 향 해

Dm7 C F/A Bb

Dm7 C F/A Bb